



3, Charter Drive, Bexley DA5 3PX
Guide Price £525,000



This beautifully presented extended 2 bedroom semi detached bungalow which offers modern spacious day to day living accommodation, is situated in a much sought after cul-de-sac location close to all amenities. Comprising of an open plan lounge, dining and fully fitted kitchen area, generous sized bedrooms with built-in wardrobes and a modern shower room, your earliest viewing of this CHAIN FREE property is very highly recommended. Other features to note include gas central heating, double glazing, 110' approx rear garden and ample easy off road parking to the front.

Local Authority: {prop_LA_county}
Council Tax Band: {council_tax_band}



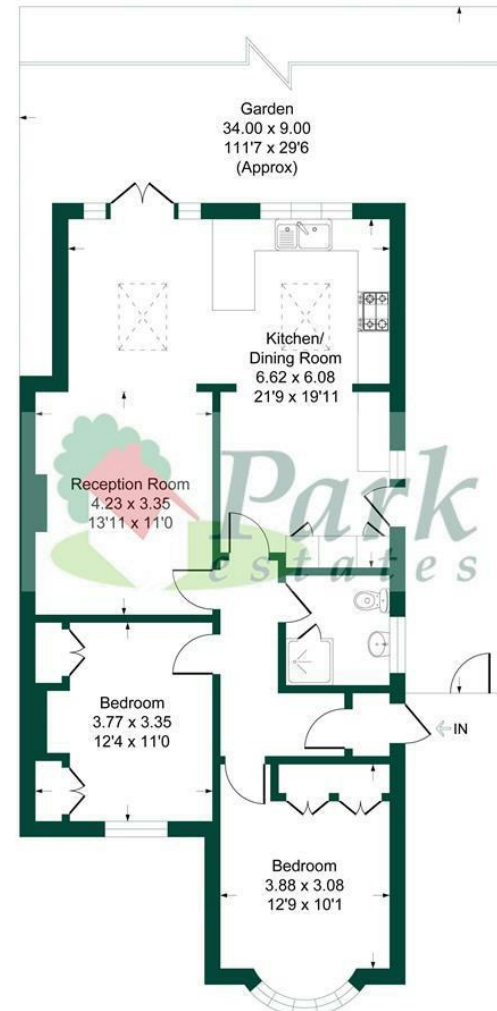
01322 553322

60-62 High Street, Bexley, Kent, DA5 1AH

bexley@parkestates.co.uk
www.parkestates.co.uk

Charter Drive, DA5

Approximate Gross Internal Area = 84.3 sq m / 908 sq ft



This plan is for layout guidance only. Not drawn to scale unless stated. Windows and door openings are approximate. Whilst every care is taken in the preparation of this plan, please check all dimensions, shapes and compass bearings before making any decisions reliant upon them.
Produced By Planpix

Every care has been taken with the preparation of details, but accuracy is in no way guaranteed. These particulars do not constitute a contract and are issued and accepted on the express understanding that all negotiations will be conducted through Park Estates. The seller does not make or give, nor do we or our employees have any authority to give a representation or warranty in relation to the property. Please contact this office before viewing the property. If there is any point which is of particular importance to you, we will be pleased to check the information for you and confirm that the property remains available. This is particularly important if you are contemplating travelling some distance to view the property. We would strongly recommend that all the information that we provide about the property is verified by yourself on inspection and also by your conveyancer, especially where statements have been made by us to the effect that the information provided by us has not been verified.